



Utility Tool for POS Instruction

Rev.1.0



Utility Tool is applicable to the following operating system:

- Microsoft Windows 10 (32 bit/64 bit)
- Microsoft Windows 8 (32 bit/64 bit)
- Microsoft Windows 7 SPI (32 bit/64 bit)
- Microsoft Windows Vista SP2 (32 bit/64 bit)
- Microsoft Windows XP Professional SP3 (32 bit)
- Microsoft Windows Server 2012(64 bit)
- Microsoft Windows Server 2008 R2
- Microsoft Windows Server 2008 SP2(32 bit/64 bit)
- Microsoft Windows Server 2003 R2 SP2(32 bit/64 bit)

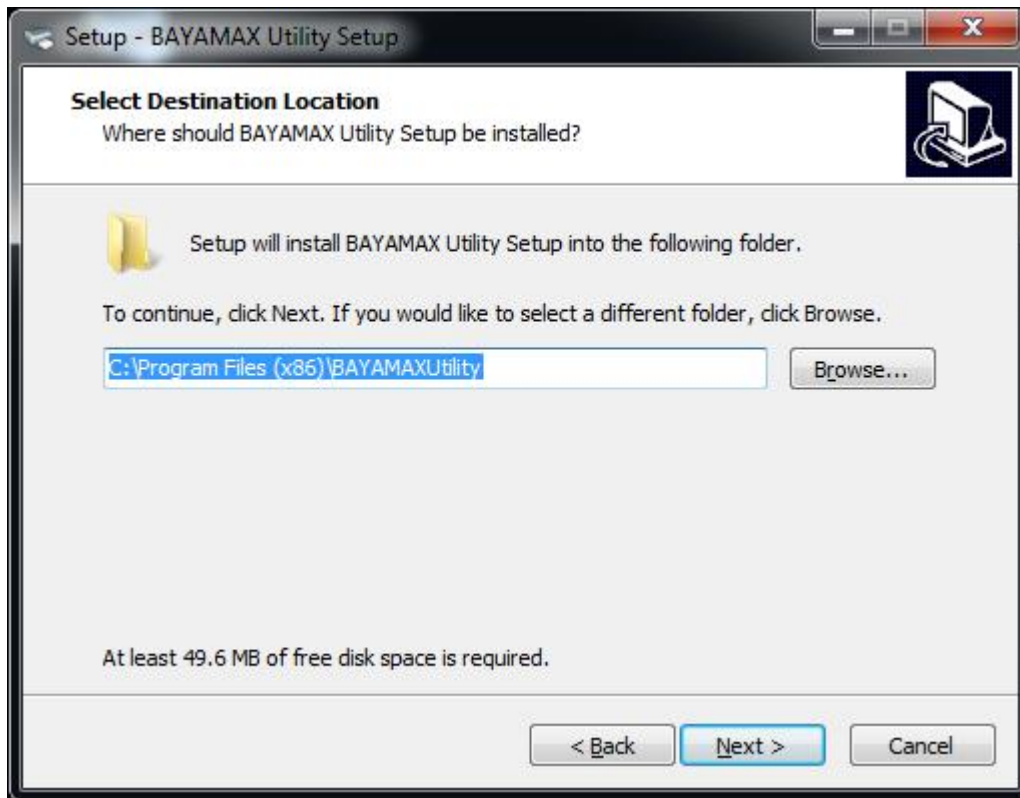
Driver version	V 1.0.0.1
-----------------------	------------------

1.Installation of Utility Tool

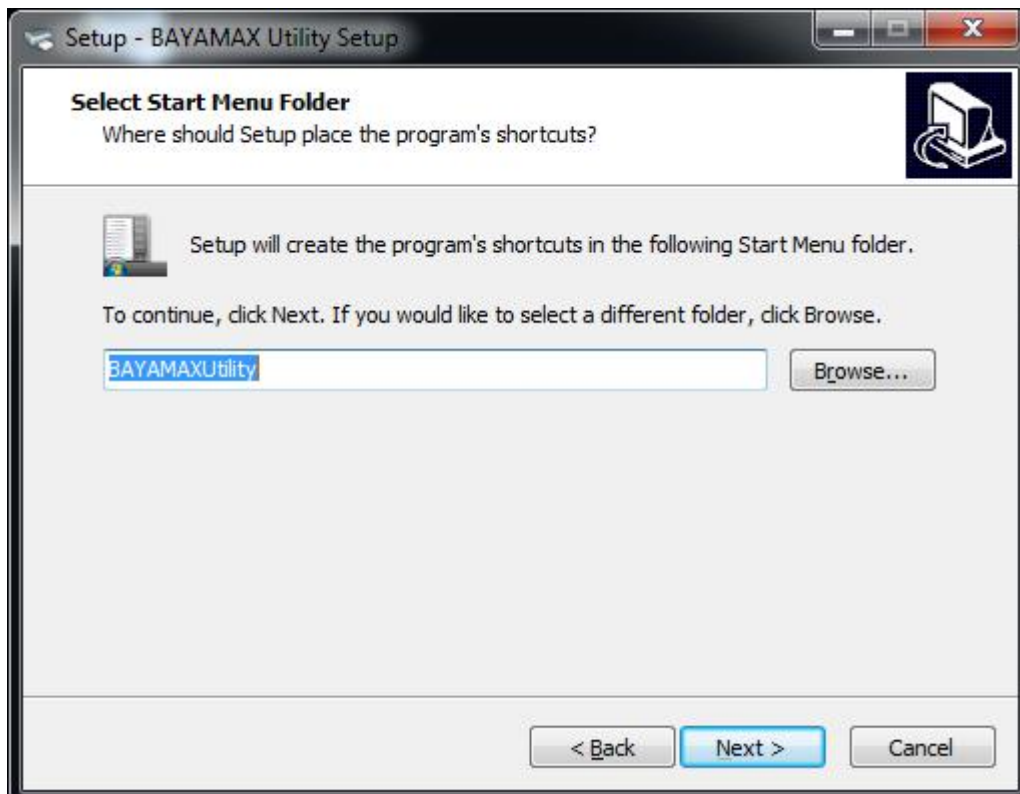
- 1.Open the installation package.
- 2.Click "Next".



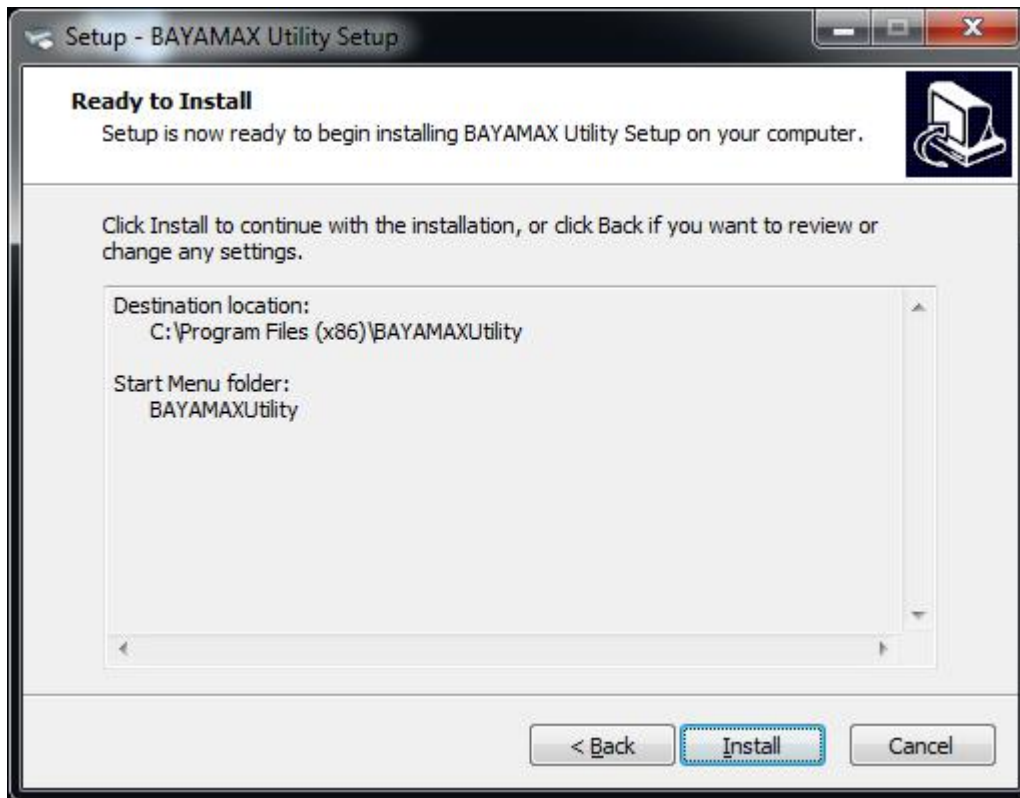
3. Select destination location to install the Utility Tool. Click “Next”.



4. Select start menu folder. Click “Next”.




5. Click "Install".



6. Click "Finish". Utility Tool is installed successfully.

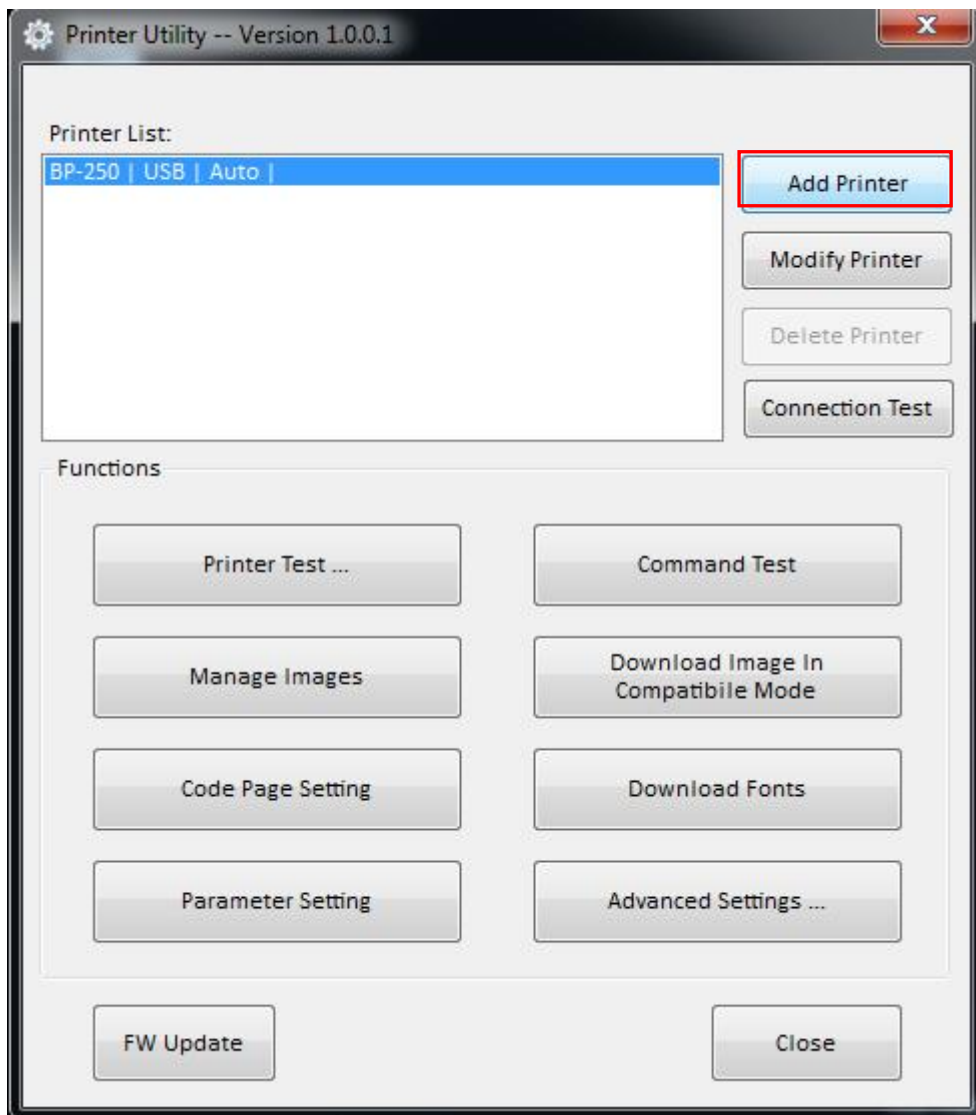


2.Using Utility Tool

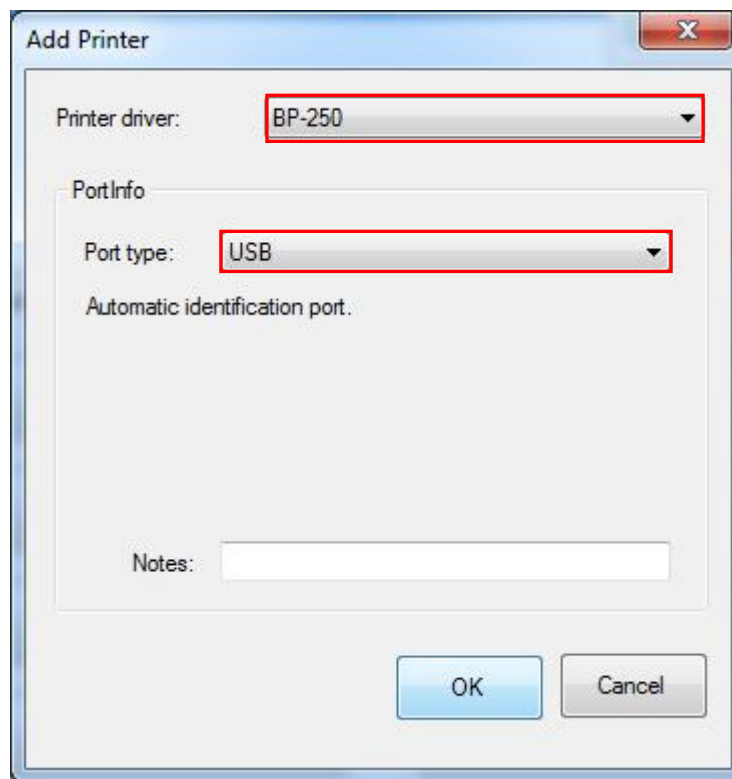
 Warning:In different operating system,screen has slight difference.Please operate it according to the tips. Take BP-250 (Windows 7) for example.

● Add printer

1.Click "Add Printer".

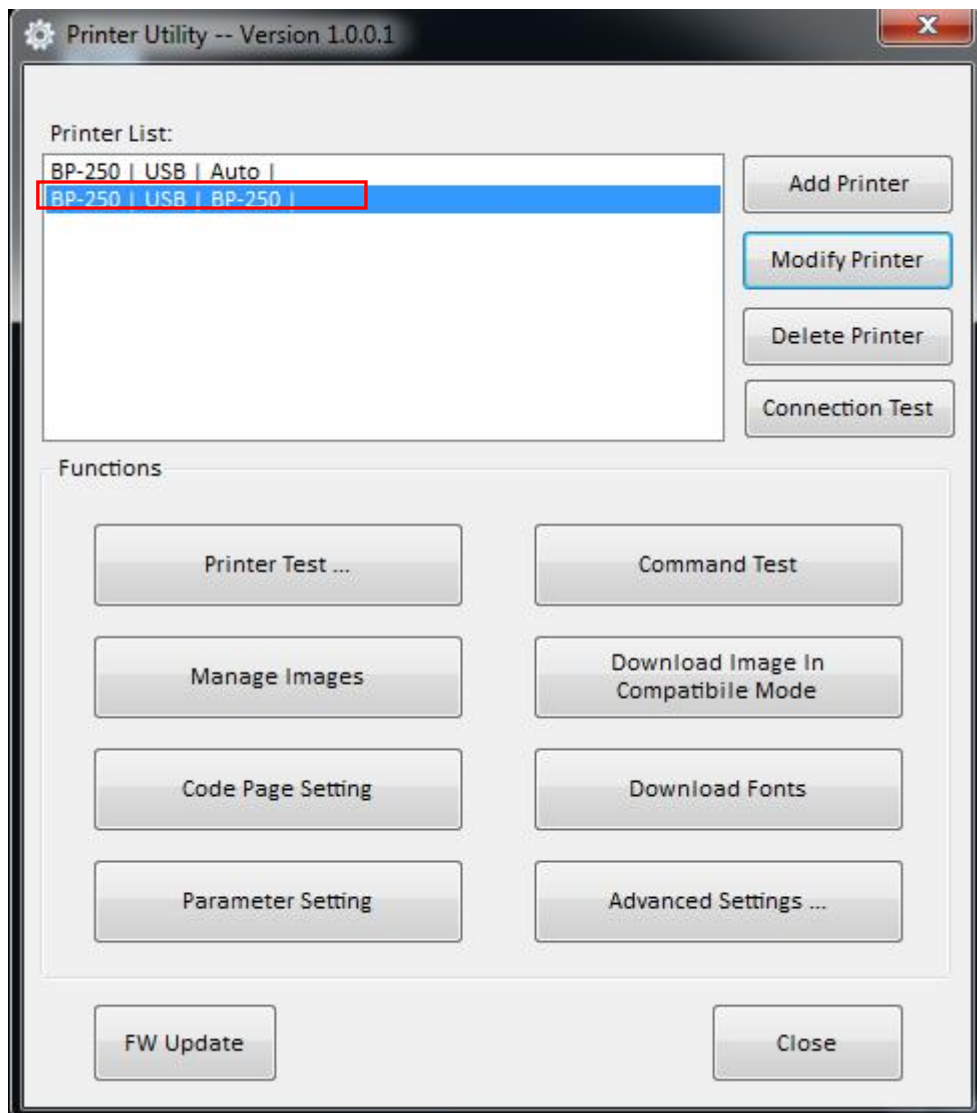


2. Choose the right printer type and port. Then click "OK". (Take BP-250 for example.)

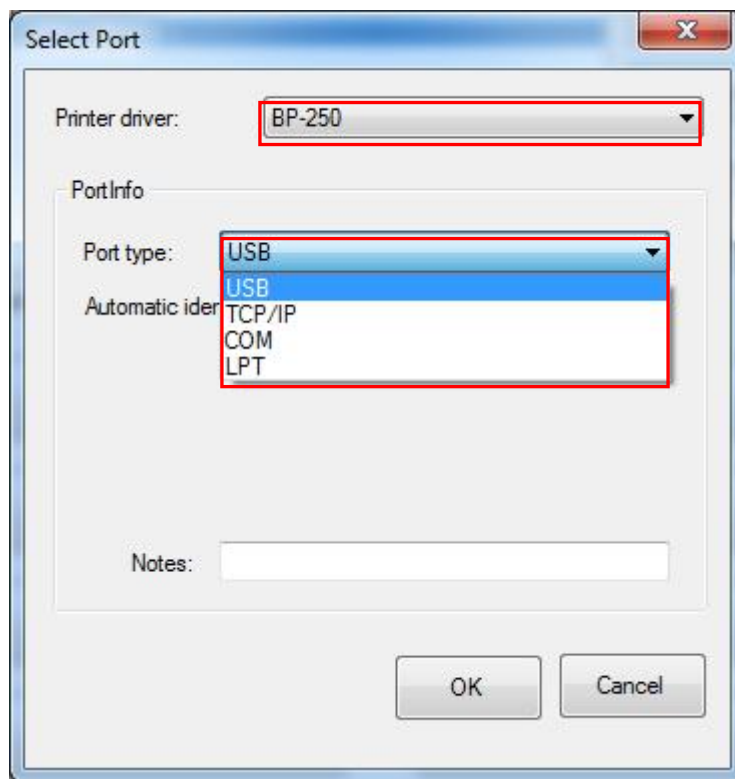


● Modify printer

1. Choose the printer you want to modify in the list. Click “Modify Printer”.



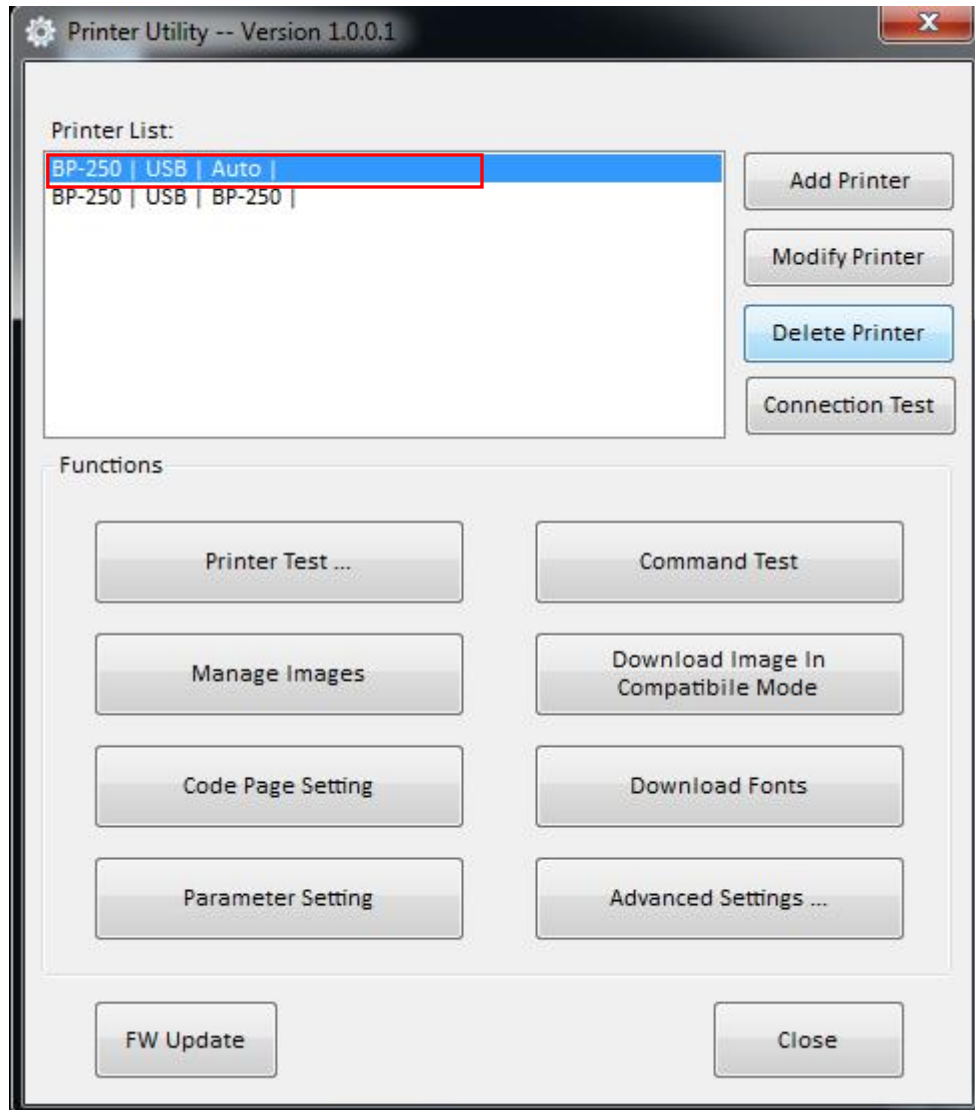
2. Choose the new printer and new port. Then click “OK”.



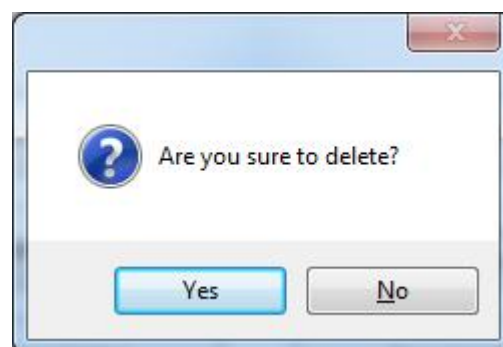
3. The new printer is added successfully.

● Delete printer

1. Choose the printer you want to delete in the list and click “Delete Printer”.



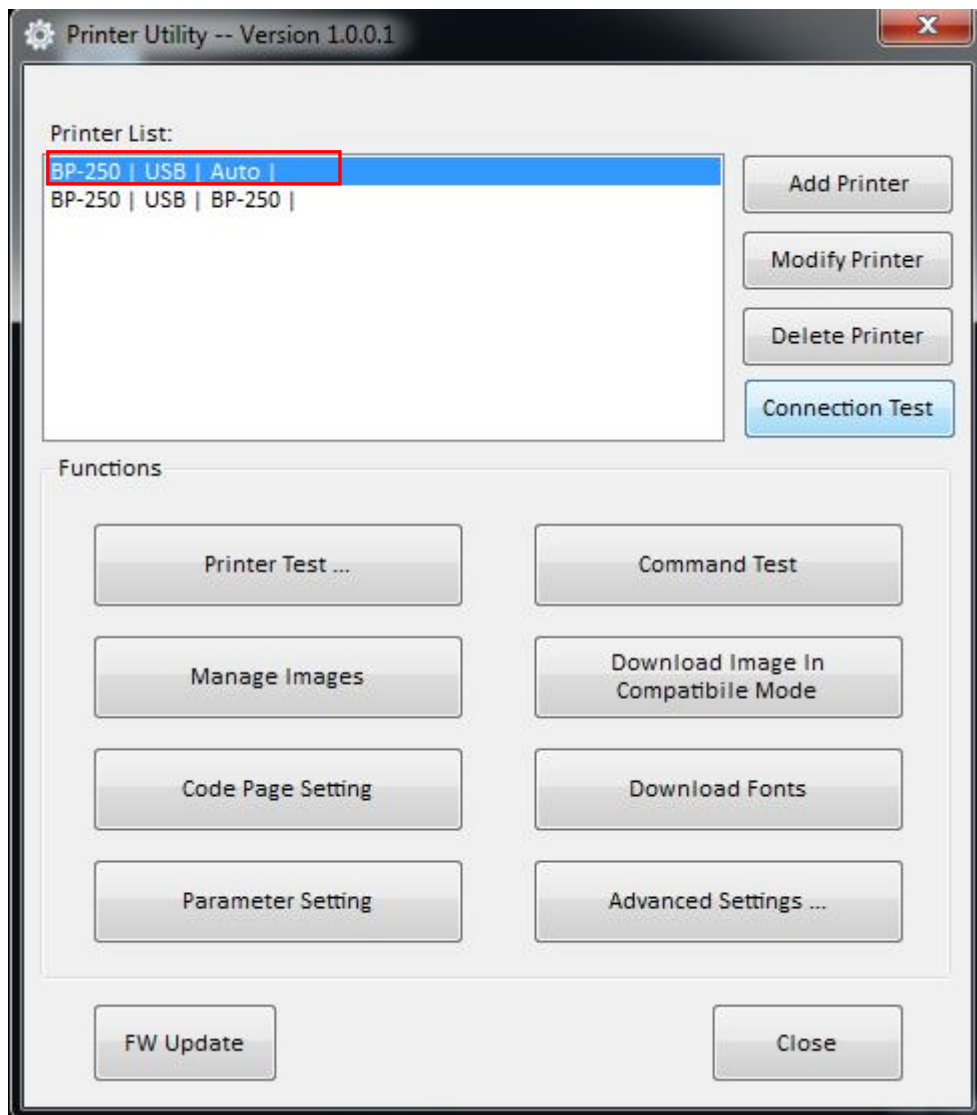
2. Click “Yes”, then the printer is deleted.



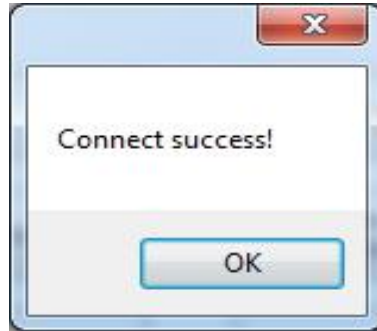
● Connection Test

Make sure printer is connected with computer and power on.

1. Choose the printer. Click “Connection Test”.



2.If the connection is successful, it will appear the following window. If the connection is unsuccessful, please connect the printer with computer.

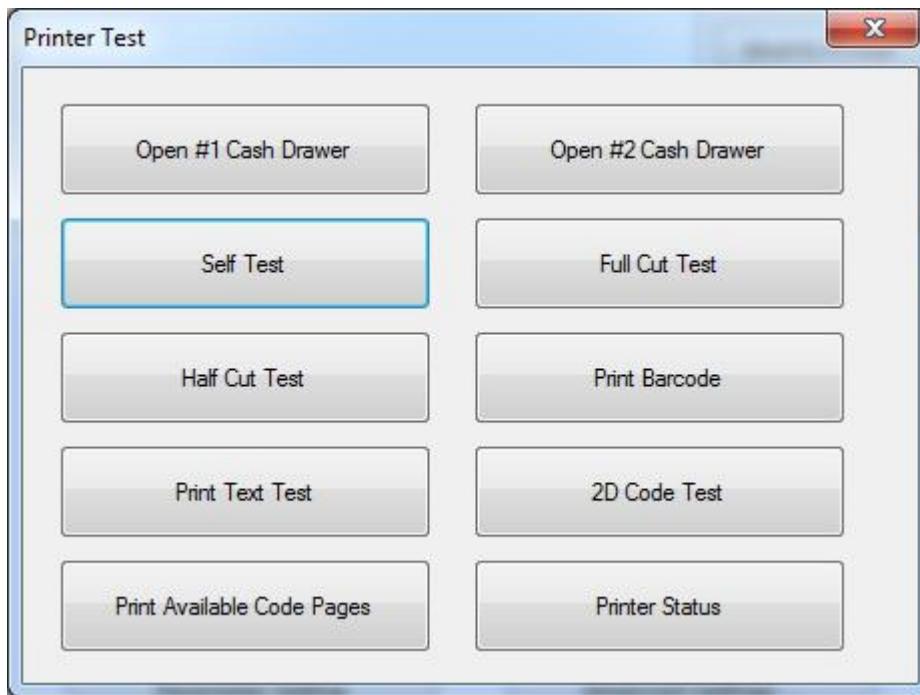


Note:

- 1.Make sure printer is connected with computer and power on.
- 2.Make sure printer is loaded with paper.
- 3.Before using the following function, carry out the "Connection Test" first.

● **Printer Test**

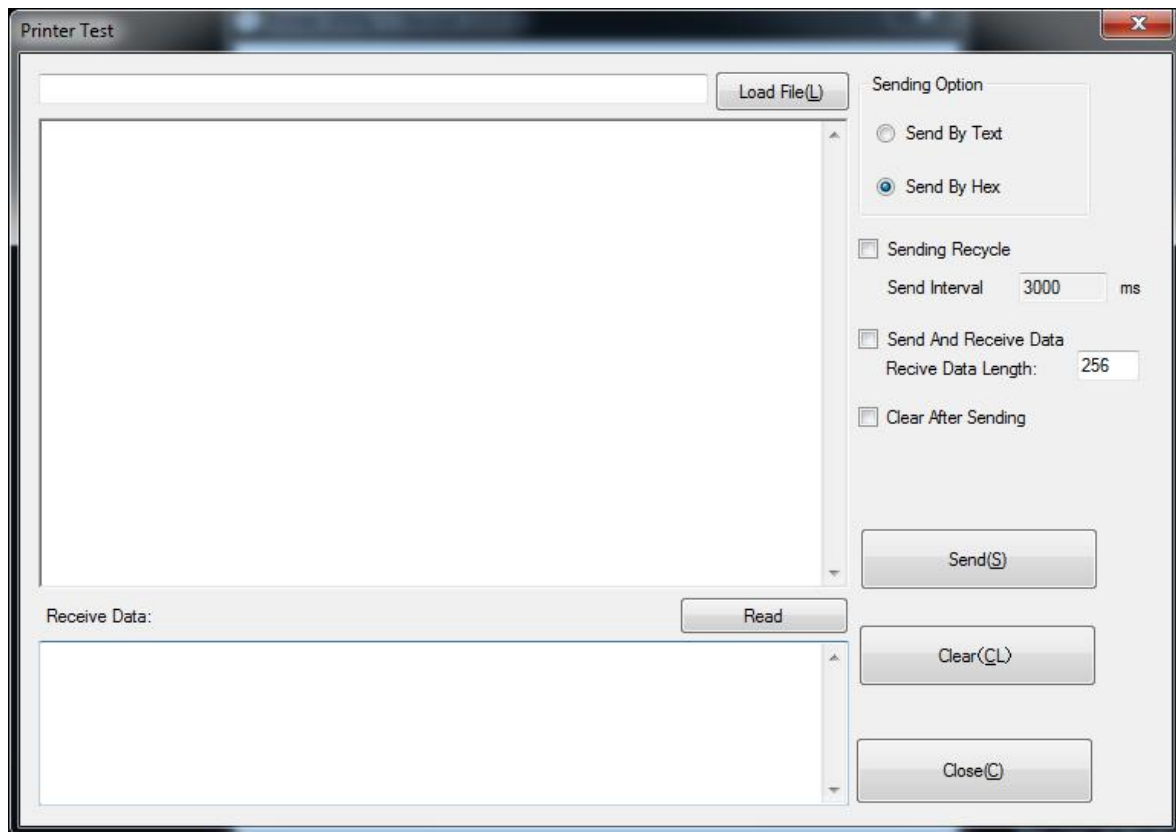
Printer Test contains the following items. Click the button and printer will execute the appropriate action.



● Command Test

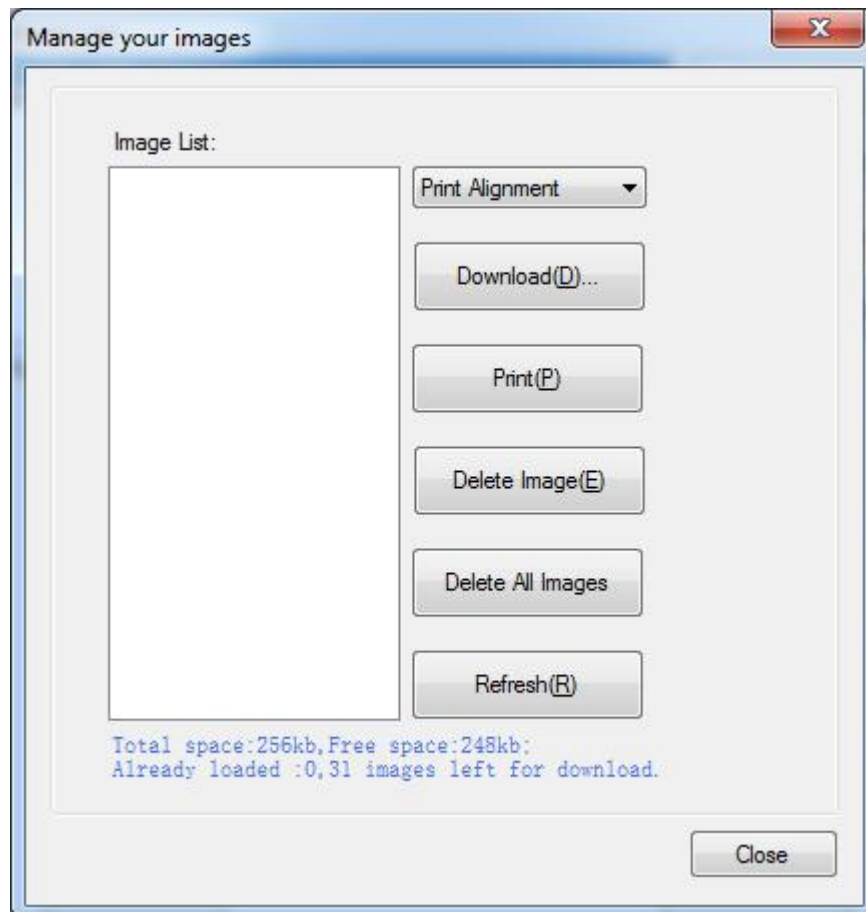
In Command Test, you can send commands to printer. Choose the Text or Hex data.

Choose a file from the existing files or input the command in the input box.

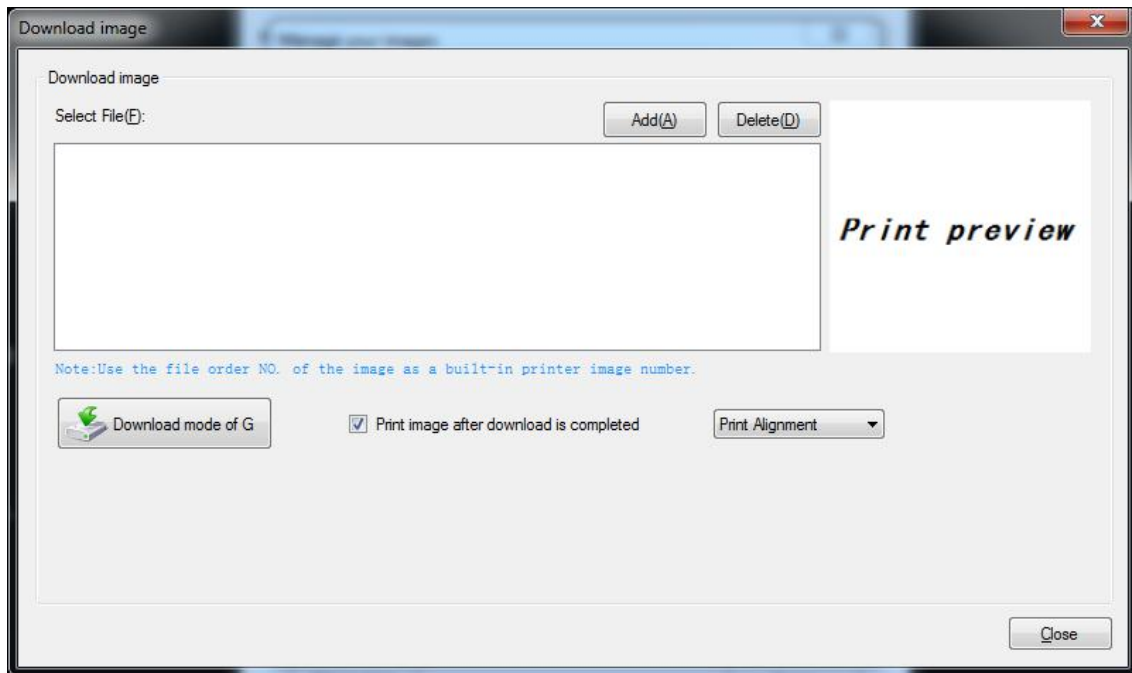


● Manage Images

Choose an image in image list. Click “Print” to print it or click “Delete Image” to delete it.



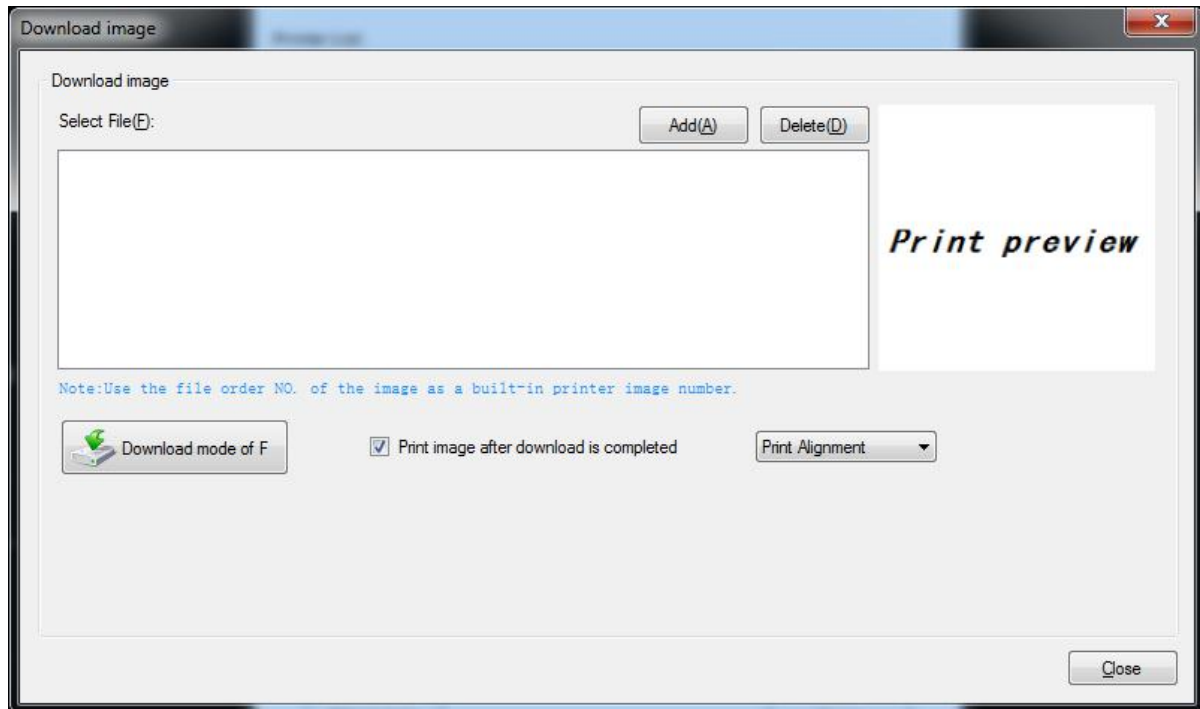
Click “Download” to download a new image into the printer.



Note: The total memory is 256K. The each bitmap should be less than 40K.

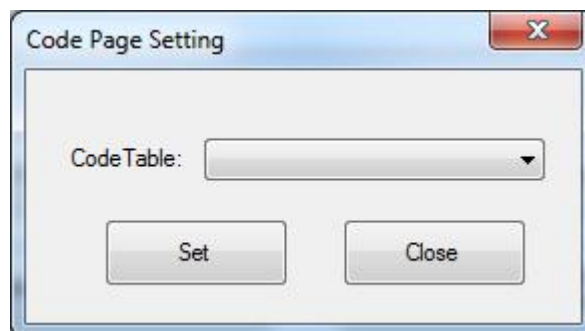
● **Download Image In Compatible Mode**

Download image in compatible mode which uses old command.



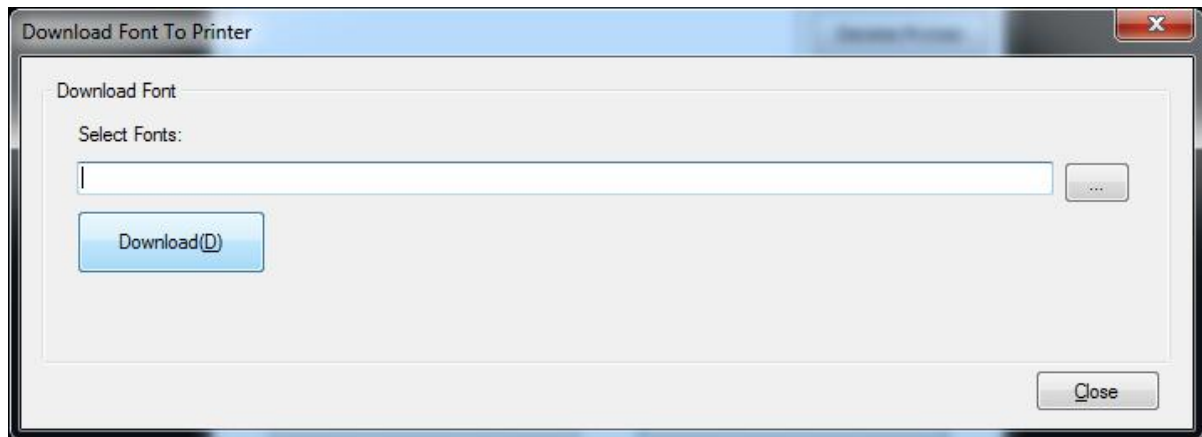
● **Code Page Setting**

Choose the item and click "Set".



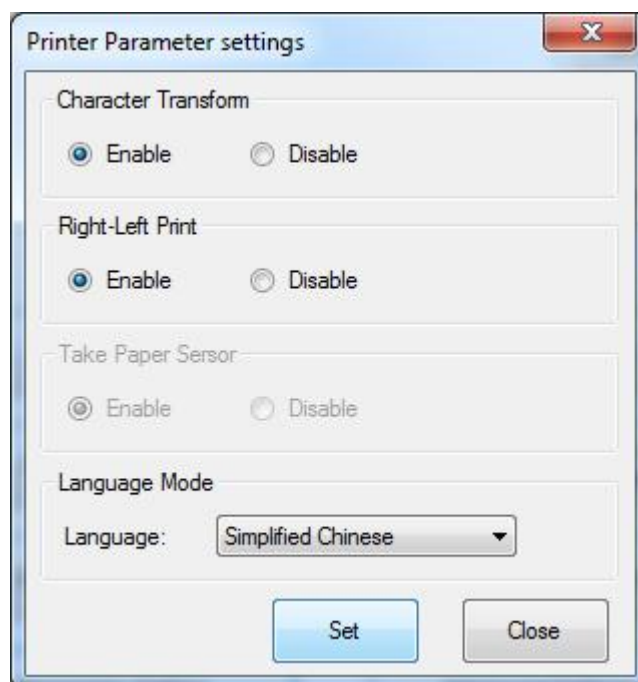
● **Download Fonts**

Choose the font from existing files and click “Download”. If you checked “Print Sample Text After Download”, the printer will print the sample text after downloading the font.



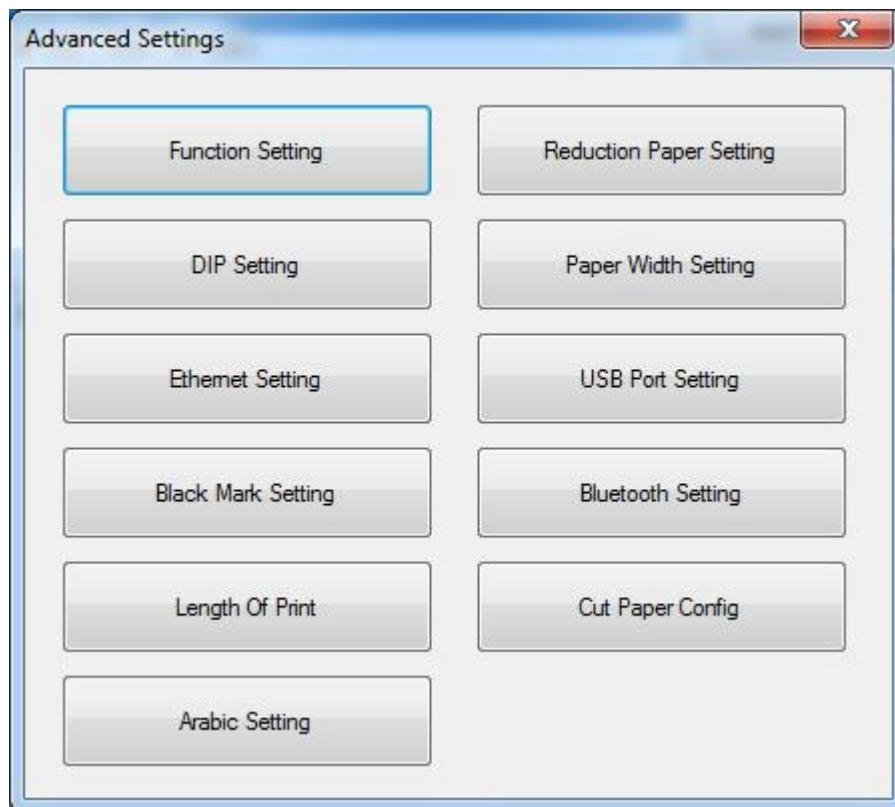
● **Parameter Setting**

Choose the item and click “Set”.



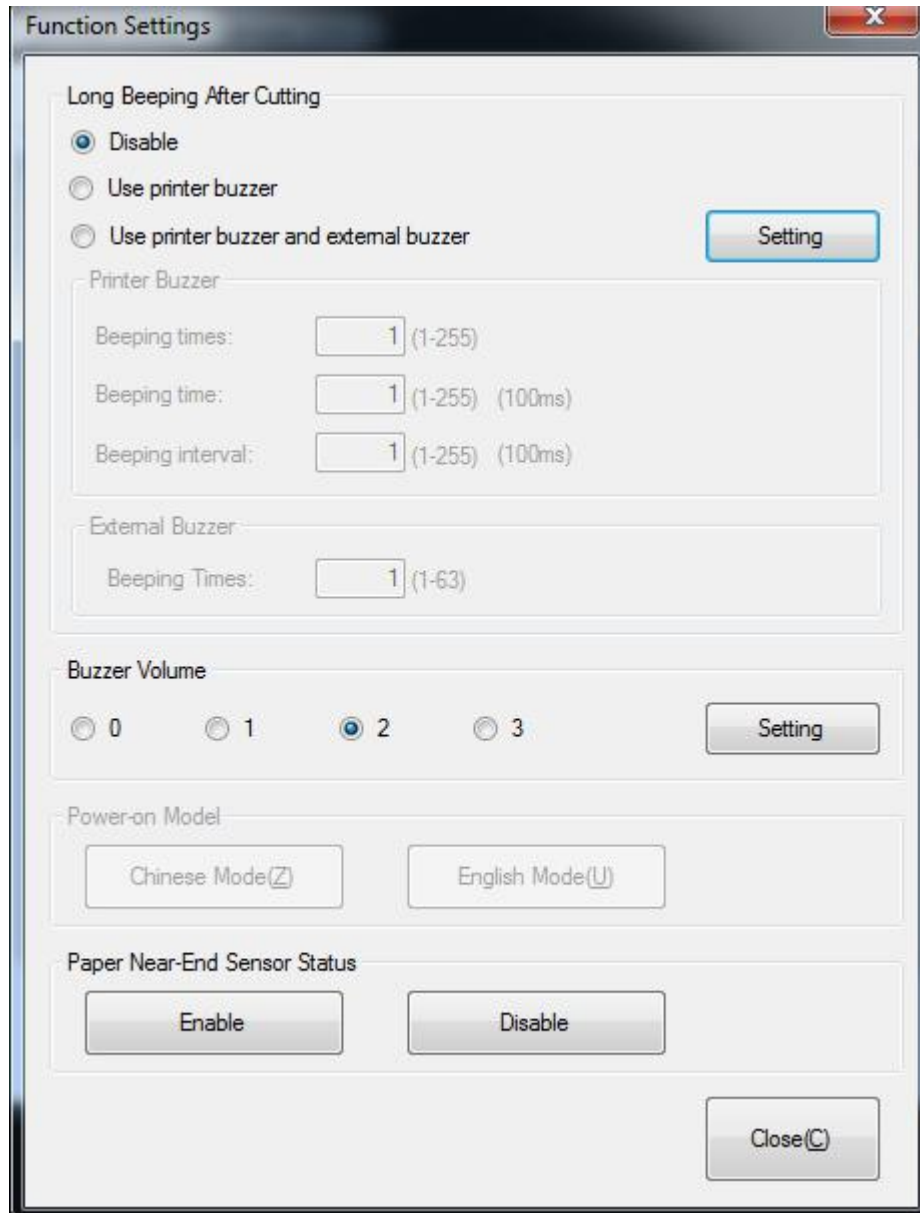
● **Advanced Settings**

Advanced Settings contain the following items. Click the button and printer will execute the appropriate action. The change will take into effect after restarting the printer.



◆ **Function Setting**

Choose the item and click “Setting”.



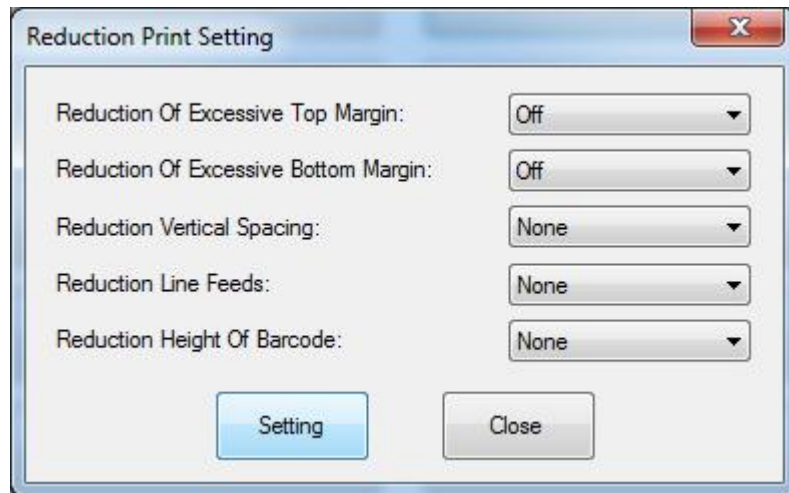
The image shows a 'Function Settings' dialog box with a title bar containing a close button (X). The dialog is organized into several sections:

- Long Beeping After Cutting:** Contains three radio buttons: 'Disable' (selected), 'Use printer buzzer', and 'Use printer buzzer and external buzzer'. A 'Setting' button is located to the right of these options.
- Printer Buzzer:** A section containing three input fields:
 - 'Beeping times:' with a value of '1' and a range '(1-255)'.
 - 'Beeping time:' with a value of '1' and a range '(1-255) (100ms)'.
 - 'Beeping interval:' with a value of '1' and a range '(1-255) (100ms)'.
- External Buzzer:** A section containing one input field:
 - 'Beeping Times:' with a value of '1' and a range '(1-63)'.
- Buzzer Volume:** Contains four radio buttons labeled '0', '1', '2' (selected), and '3'. A 'Setting' button is located to the right.
- Power-on Model:** Contains two buttons: 'Chinese Mode(Z)' and 'English Mode(U)'.
- Paper Near-End Sensor Status:** Contains two buttons: 'Enable' and 'Disable'.

A 'Close(C)' button is located at the bottom right of the dialog.

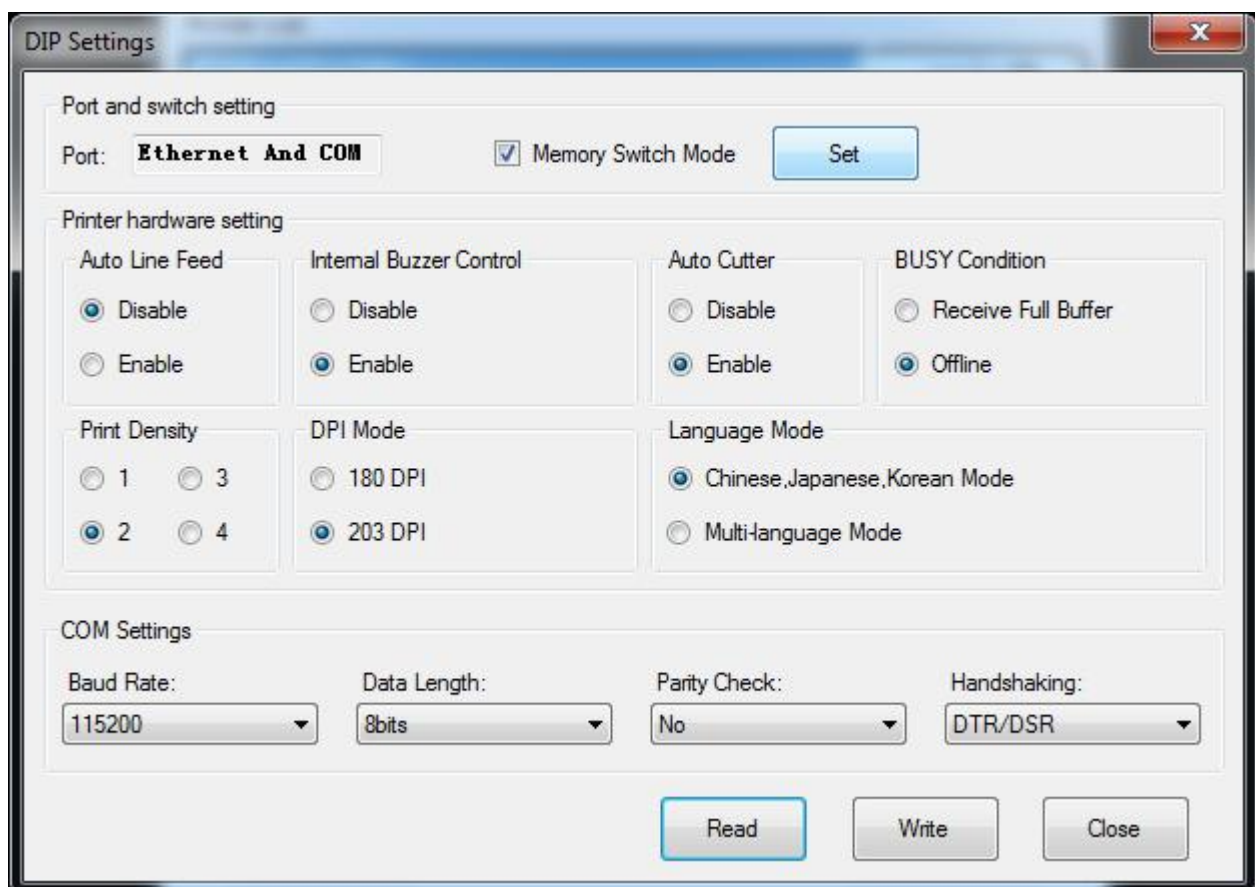
◆ Reduction Paper Setting

Choose the item and click “Setting”.



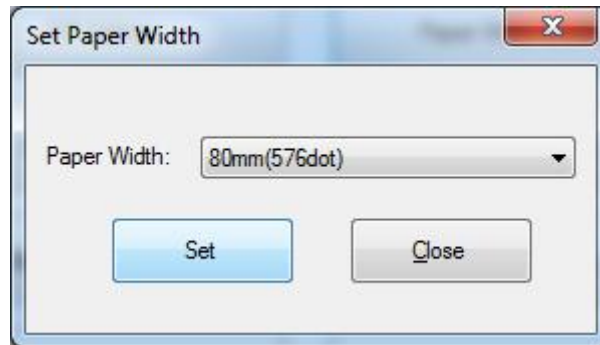
◆ DIP Setting

Choose the item and click “Set”.



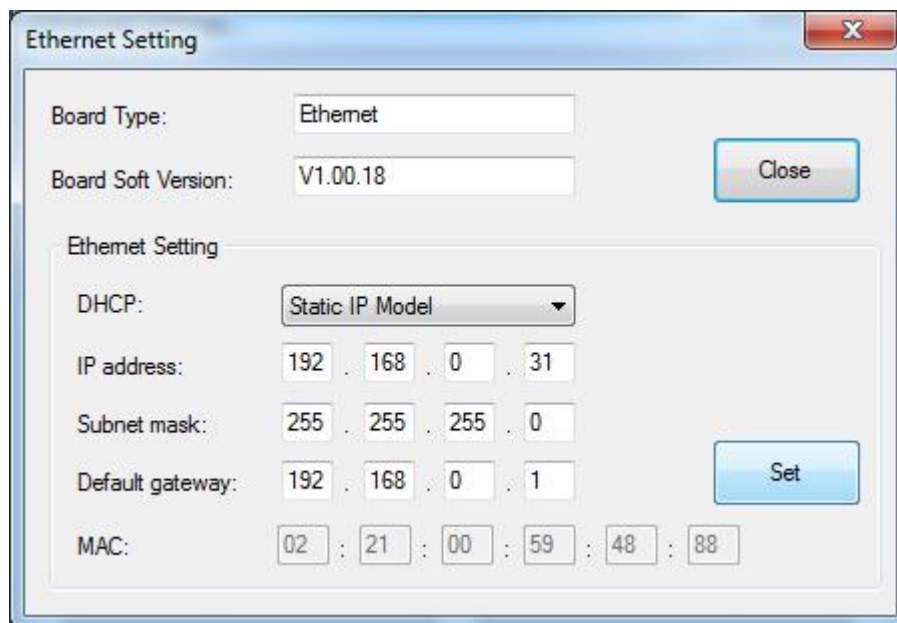
◆ Paper Width Setting

Choose the item and click “Set”.



◆ Ethernet Setting

Choose the item and click “Set”.



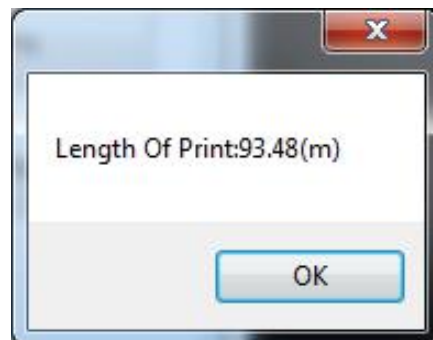
◆ USB Port Setting

Choose the item and click “Setting(S)”.



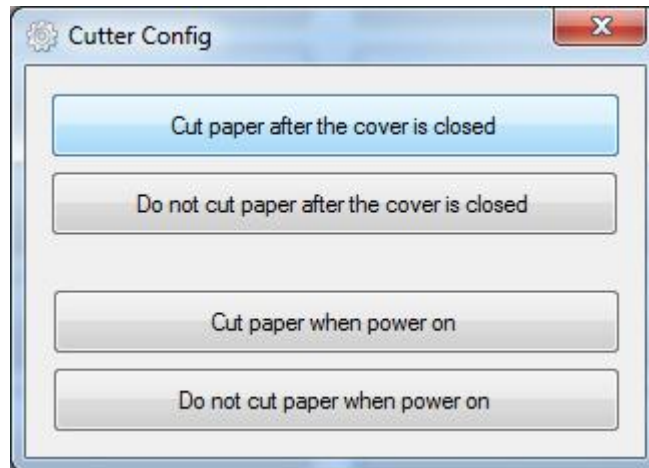
◆ Length Of Print

Choose the item and it shows the length of print, then click “OK”.



◆ Cut Paper Config

Choose the following choices to set “cut paper config”.



◆ Arabic Setting

Choose the item for Arabic setting.

